

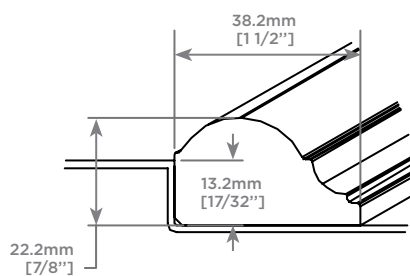
THE MOLDINGS



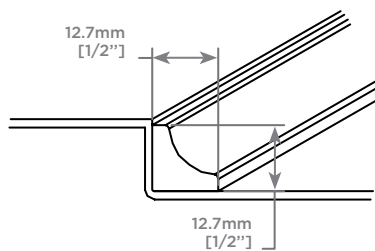
UL 10C (Standard Positive Pressure Fire Tests of Door Assemblies),
British standard BS-476-22

Applicable to doors with recessed panels or doors with inlays, the moldings allow you to enrich the design with both a classic and warm touch. Moldings in aluminum, steel or in wood are installed in factory.

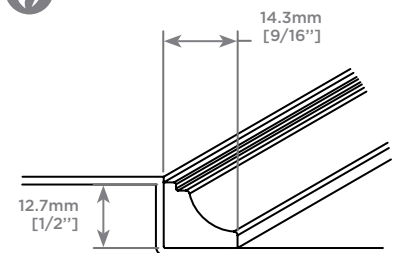
ALUMINUM #AM 918 DB



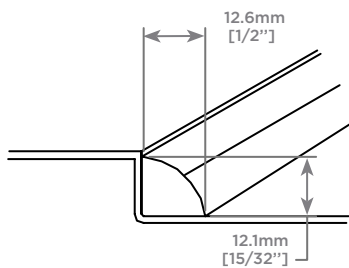
STEEL #SM 1229 DB



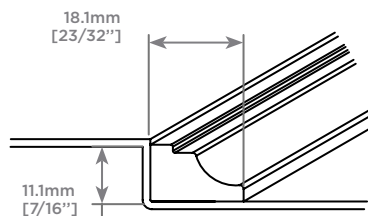
STEEL #SM 2036-A



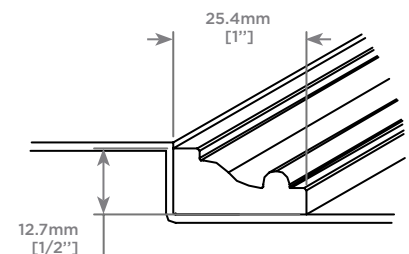
ALUMINUM #AM V-15947



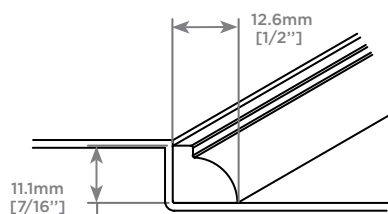
STEEL #SM 919 DB



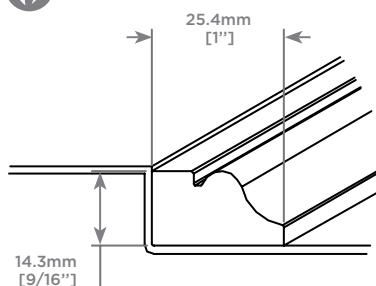
STEEL #SM 1853



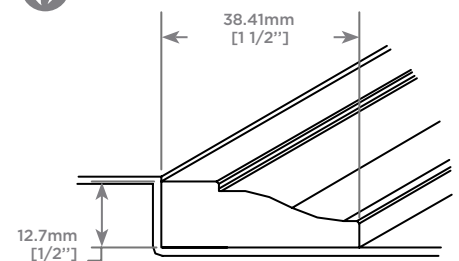
STEEL #SM 1229 DB



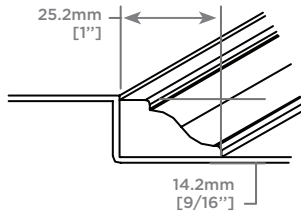
STEEL #SM 845 DB



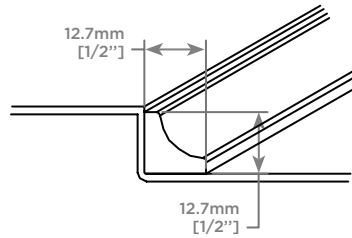
STEEL #SM 1920



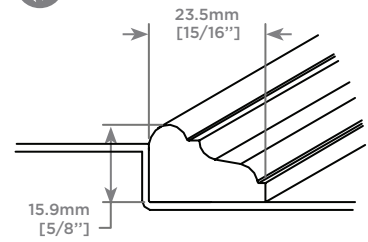
STEEL #SM 2545



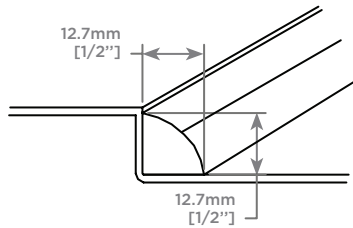
HARDWOOD #WM GO229



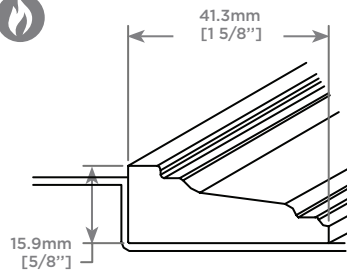
HARDWOOD #WM 319



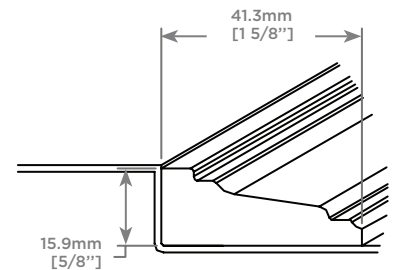
HARDWOOD #WM QR225



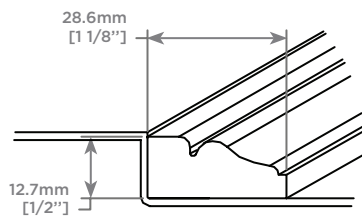
HARDWOOD #WM 513 (PROTRUDING)



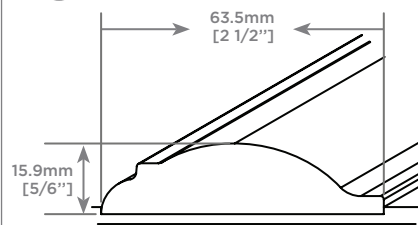
HARDWOOD #WM 513 (RECESSED)



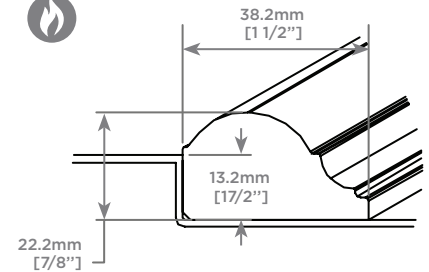
HARDWOOD #WM 048



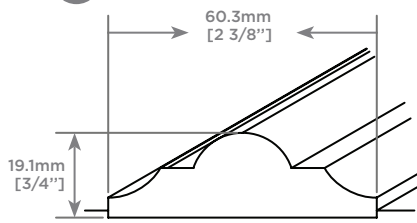
HARDWOOD #WM 621 (INLAY)



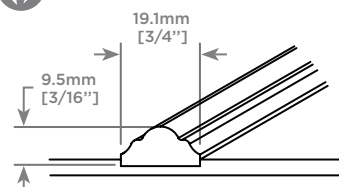
HARDWOOD #WM 849 (SAME AS #AM 918)



HARDWOOD #WM 575 (INLAY)



HARDWOOD #WM 151 (INLAY)



HARDWOOD #WM 538 (INLAY)

