

THE INLAYS

For doors with inlays, **DE LA FONTAINE** has selected a wide range of suitable materials to integrate into steel, among which are: wood, stainless, brass, plastic laminate and metal laminate. Whether it is for decorative elements (curves, lines, forms) or functional elements (protective plates, numbers, logos, signage), you can choose the material, the texture and the color which will give a classic and contemporary look to your door which is definitely avant-garde.

FOR MORE CHOICES, PLEASE VISIT OUR SUPPLIER WEBSITE:

www.arborite.com

www.chemetalco.com



PL 1539



PL P-323



PL P-623



PL P-347



PL P-930



PL P-957



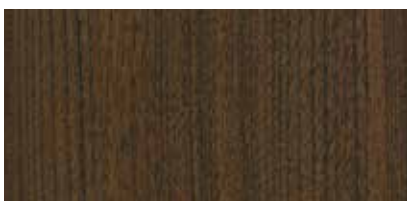
PL W-372



PL W-405



PL W-417



PL W-418



PL W-443

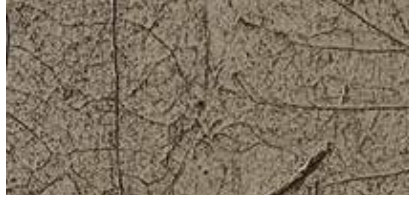


ML 101

Note: The finishes shown may vary slightly; please request a physical sample before final decision.



ML 241



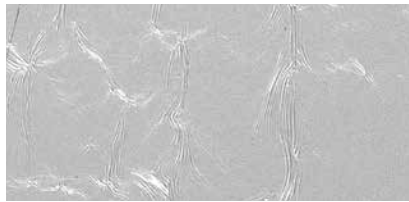
ML 260



ML 263



ML 264



ML 270



ML 313



ML 315



ML 344



ML 505



ML 803



ML 910

Note: The finishes shown may vary slightly; please request a physical sample before final decision.